

5112-3R NEMA 3R Enclosure

INSTALLATION INSTRUCTIONS

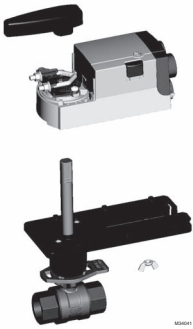


Fig. 1. Step 1. Remove actuator from valve.

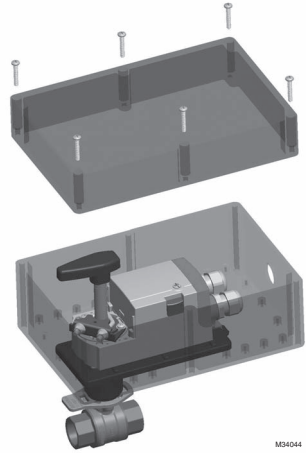


Fig. 3. Step 3. Put on NEMA 3R enclosure cover.

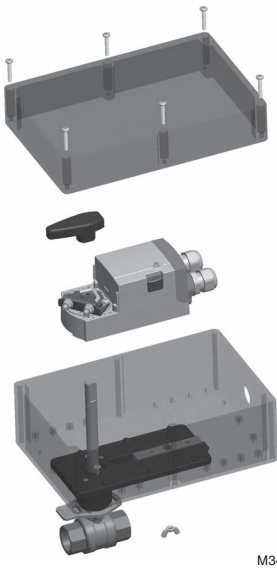
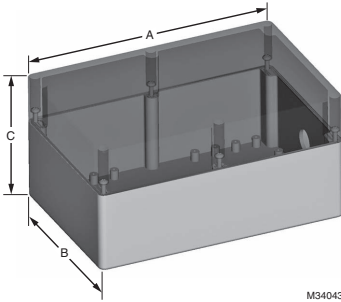


Fig. 2. Step 2. Attach NEMA 3R enclosure.



Table 1. 5112-3R NEMA 3R Enclosure dimension in inches (millimeters)

A		B		C		Weight (Enclosure with Hardware Kit)	
in.	(mm)	in.	(mm)	in.	(mm)	lb.	(kg)
9.5	240	6.25	160	4.75	121	1.75	0.79



M34043

**Fig. 4. 5112-3R NEMA 3R Enclosure
(see Table 1 above for dimensions)**

Table 2. Component Parts

Item #	Description	Qty	Actuator Part # (components needed)	
				MS3103J MS7403A MS7503A MS8103A MS4103A MS3105J MN7405A MS7505A MS8105A MS4105A
1	Bracket, Anti-Rotation	1	X	X
2	Screw, Flat Head, Hex Socket	1	X	X
3	Bolt, Hex, Class 8.8	1		X
4	Screw, Cap, Hex Socket	1	X	
5	Plastic Handle	1	X	X
6	Wing Nut	1	X	X

By using this Honeywell literature, you agree that Honeywell will have no liability for any damages arising out of your use or modification to the literature. You will defend and indemnify Honeywell, its affiliates and subsidiaries, from and against any liability, cost, or damages, including attorneys' fees, arising out of, or resulting from, any modification to the literature by you.

Automation and Control Solutions

Honeywell International Inc.
1985 Douglas Drive North
Golden Valley, MN 55422
customer.honeywell.com

